

RESIDENCE A1



THOMPSON®
PUERTO VALLARTA
HOTEL & RESIDENCES

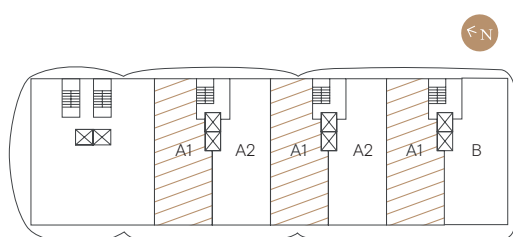
SPECIFICATIONS
ESPECIFICACIONES

3 BEDROOMS / RECÁMARAS
4 BATHROOMS / BAÑOS
STUDIO / ESTUDIO

AC AREA / INTERIOR
1,974 FT² / 183 M²

TERRACE / BALCÓN
388 FT² / 36 M²

TOTAL AREA / ÁREA TOTAL
2,362 FT² / 219 M²



*TERRACES MAY VARY BY UNIT AND BY FLOOR
*UNIT DIMENSIONS ARE APPROXIMATE AND BASED ON CURRENT PLANS.

The dimensions stated are measured based on the boundaries of the exterior walls and the centerline of the common inner walls and may vary from the dimensions that would be determined using the description and definition of "Unit," used by the Developer in construction which generally only includes the interior airspace between the perimeter walls and excludes interior structural components. Note that the measurements of the rooms set out in this plan are usually taken at the largest points of each one of the rooms (as if the room were a perfect rectangle), without accounting for cutouts. Consequently, the actual room area will typically be less than the product obtained by multiplying the indicated length by the width. All dimensions are approximate and vary with actual construction and all floors and development plans are subject to change. Renderings depict furnishings not included with purchase, but which may be available at an additional cost. The layout of furniture is a suggestion and the uses of space shown are not guaranteed upon completion. Consult the Developer' prospectus to learn what is included with Unit purchase and to understand Unit dimensions. 2023 © Interam Banco, S.A., I.B.M., Fideicomiso F/4736 with all rights reserved.

RESIDENCE A2



THOMPSON®
PUERTO VALLARTA
HOTEL & RESIDENCES

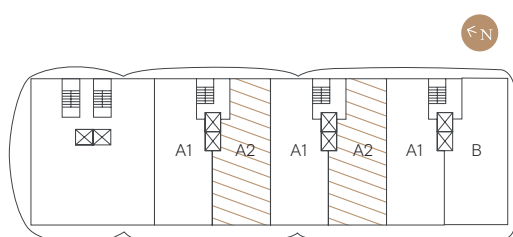
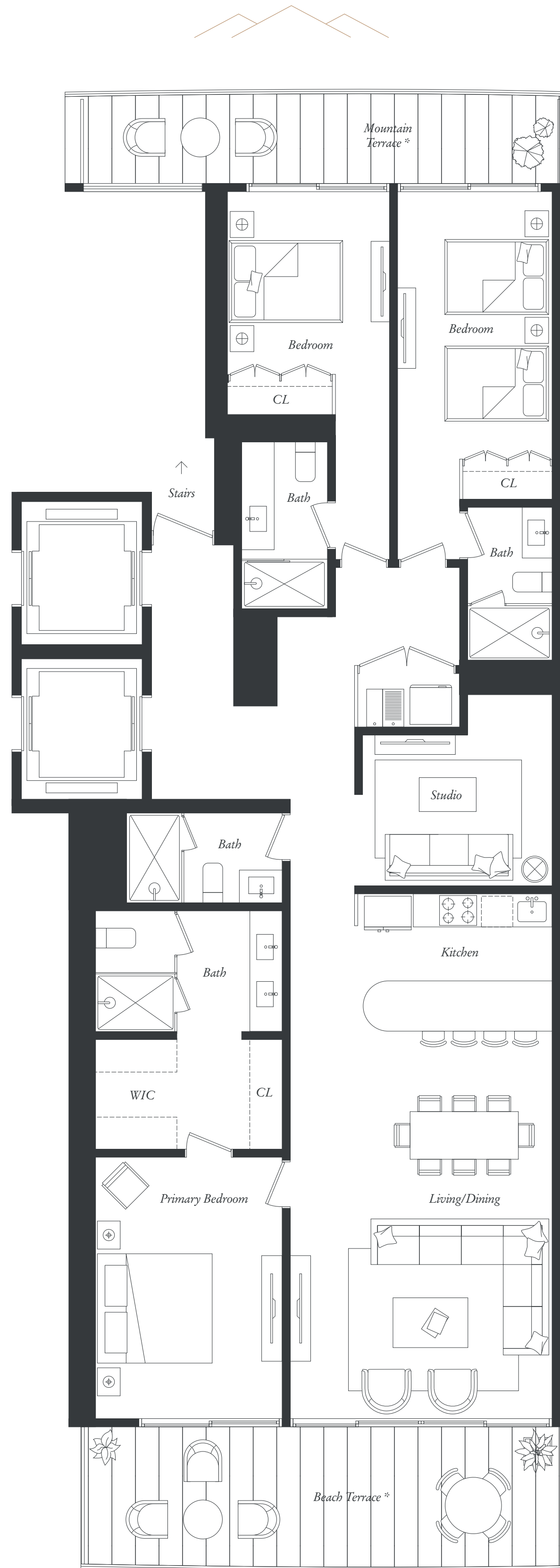
SPECIFICATIONS
ESPECIFICACIONES

3 BEDROOMS / RECÁMARAS
4 BATHROOMS / BAÑOS
STUDIO / ESTUDIO

AC AREA / INTERIOR
1,974 FT² / 183 M²

TERRACE / BALCÓN
388 FT² / 36 M²

TOTAL AREA / ÁREA TOTAL
2,362 FT² / 219 M²



*TERRACES MAY VARY BY UNIT AND BY FLOOR
*UNIT DIMENSIONS ARE APPROXIMATE AND BASED ON CURRENT PLANS.

The dimensions stated are measured based on the boundaries of the exterior walls and the centerline of the common inner walls and may vary from the dimensions that would be determined using the description and definition of "Unit," used by the Developer in construction which generally only includes the interior airspace between the perimeter walls and excludes interior structural components. Note that the measurements of the rooms set out in this plan are usually taken at the largest points of each one of the rooms (as if the room were a perfect rectangle), without accounting for cutouts. Consequently, the actual room area will typically be less than the product obtained by multiplying the indicated length by the width. All dimensions are approximate and vary with actual construction and all floors and development plans are subject to change. Renderings depict furnishings not included with purchase, but which may be available at an additional cost. The layout of furniture is a suggestion and the uses of space shown are not guaranteed upon completion. Consult the Developer' prospectus to learn what is included with Unit purchase and to understand Unit dimensions. 2023 © Intercom Banco, S.A., I.B.M., Fidelcomiso F/4736 with all rights reserved.

RESIDENCE B



THOMPSON®
PUERTO VALLARTA
HOTEL & RESIDENCES

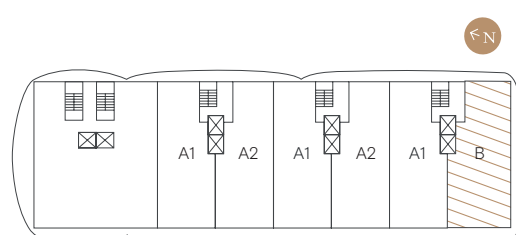
SPECIFICATIONS
ESPECIFICACIONES

4 BEDROOMS / RECÁMARAS
4 BATHROOMS / BAÑOS

AC AREA / INTERIOR
2,316 FT² / 215 M²

TERRACE / BALCÓN
721 FT² / 67 M²

TOTAL AREA / ÁREA TOTAL
3,037 FT² / 282 M²



*TERRACES MAY VARY BY UNIT AND BY FLOOR
*UNIT DIMENSIONS ARE APPROXIMATE AND BASED ON CURRENT PLANS.

The dimensions stated are measured based on the boundaries of the exterior walls and the centerline of the common inner walls and may vary from the dimensions that would be determined using the description and definition of "Unit," used by the Developer in construction which generally only includes the interior airspace between the perimeter walls and excludes interior structural components. Note that the measurements of the rooms set out in this plan are usually taken at the largest points of each one of the rooms (as if the room were a perfect rectangle), without accounting for cutouts. Consequently, the actual room area will typically be less than the product obtained by multiplying the indicated length by the width. All dimensions are approximate and vary with actual construction and all floors and development plans are subject to change. Renderings depict furnishings not included with purchase, but which may be available at an additional cost. The layout of furniture is a suggestion and the uses of space shown are not guaranteed upon completion. Consult the Developer' prospectus to learn what is included with Unit purchase and to understand Unit dimensions. 2023 © Interam Banco, S.A., I.B.M., Fidelcomiso F/4736 with all rights reserved.

RESIDENCE C



THOMPSON®
PUERTO VALLARTA
HOTEL & RESIDENCES

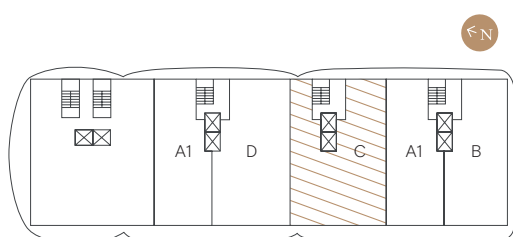
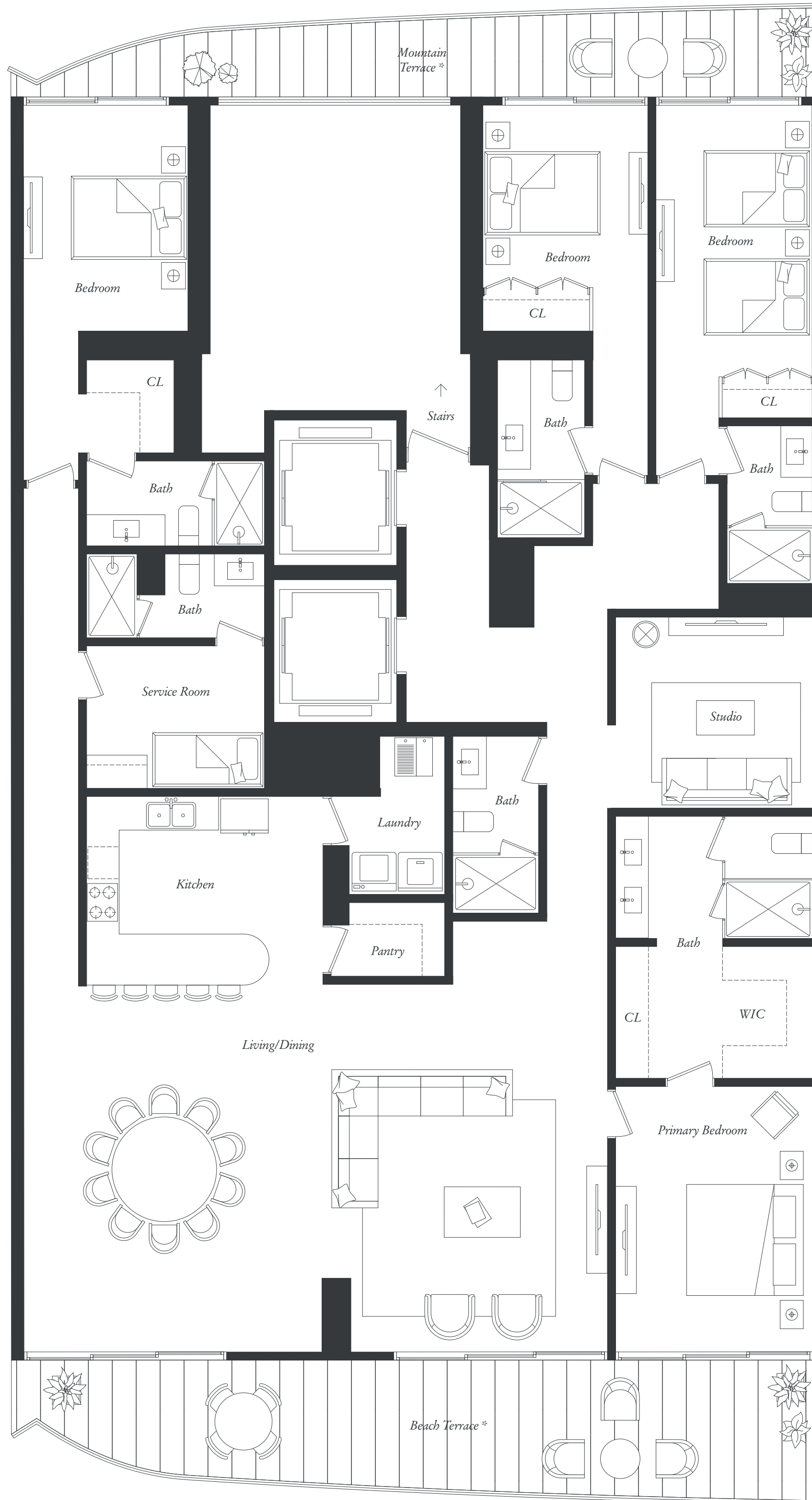
SPECIFICATIONS
ESPECIFICACIONES

4 BEDROOMS / RECÁMARAS
5 BATHROOMS / BAÑOS
SERVICE ROOM / RECAMARA DE SERVICIO
STUDIO / ESTUDIO

AC AREA / INTERIOR
3,166 FT² / 294 M²

TERRACE / BALCÓN
721 FT² / 67 M²

TOTAL AREA / ÁREA TOTAL
3,887 FT² / 361 M²



*TERRACES MAY VARY BY UNIT AND BY FLOOR
*UNIT DIMENSIONS ARE APPROXIMATE AND BASED ON CURRENT PLANS.

The dimensions stated are measured based on the boundaries of the exterior walls and the centerline of the common inner walls and may vary from the dimensions that would be determined using the description and definition of "Unit," used by the Developer in construction which generally only includes the interior airspace between the perimeter walls and excludes interior structural components. Note that the measurements of the rooms set out in this plan are usually taken at the largest points of each one of the rooms (as if the room were a perfect rectangle), without accounting for cutouts. Consequently, the actual room area will typically be less than the product obtained by multiplying the indicated length by the width. All dimensions are approximate and vary with actual construction and all floors and development plans are subject to change. Renderings depict furnishings not included with purchase, but which may be available at an additional cost. The layout of furniture is a suggestion and the uses of space shown are not guaranteed upon completion. Consult the Developer' prospectus to learn what is included with Unit purchase and to understand Unit dimensions. 2023 © Intercom Banco, S.A., I.B.M., Fideicomiso F/4736 with all rights reserved.

RESIDENCE D



THOMPSON
 PUERTO VALLARTA
 HOTEL & RESIDENCES

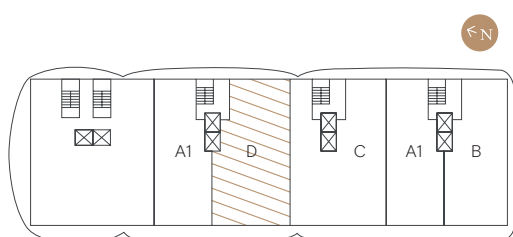
SPECIFICATIONS ESPECIFICACIONES

- 4 BEDROOMS / RECÁMARAS
- 5 BATHROOMS / BAÑOS
- PANTRY / DESPENSA
- SERVICE ROOM / RECAMARA DE SERVICIO

AC AREA / INTERIOR
 2,758 FT² / 256 M²

TERRACE / BALCÓN
 495 FT² / 46 M²

TOTAL AREA / ÁREA TOTAL
 3,253 FT² / 302 M²



*TERRACES MAY VARY BY UNIT AND BY FLOOR
 *UNIT DIMENSIONS ARE APPROXIMATE AND BASED ON CURRENT PLANS.

The dimensions stated are measured based on the boundaries of the exterior walls and the centerline of the common inner walls and may vary from the dimensions that would be determined using the description and definition of "Unit," used by the Developer in construction which generally only includes the interior airspace between the perimeter walls and excludes interior structural components. Note that the measurements of the rooms set out in this plan are usually taken at the largest points of each one of the rooms (as if the room were a perfect rectangle), without accounting for cutouts. Consequently, the actual room area will typically be less than the product obtained by multiplying the indicated length by the width. All dimensions are approximate and vary with actual construction and all floors and development plans are subject to change. Renderings depict furnishings not included with purchase, but which may be available at an additional cost. The layout of furniture is a suggestion and the uses of space shown are not guaranteed upon completion. Consult the Developer' prospectus to learn what is included with Unit purchase and to understand Unit dimensions. 2023 © Interam Banco, S.A., I.B.M., Fidelcomiso F/4736 with all rights reserved.